

Pressure Gauge Mounting

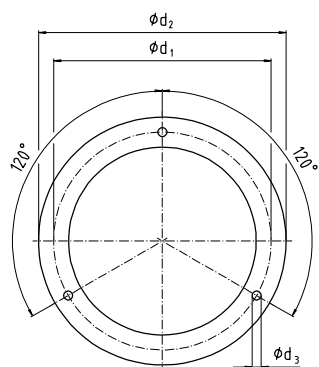
Technical Information

Panel and surface flanges Panel cut-out dimensions

3-hole panel or surface mounting flanges for round case gauges

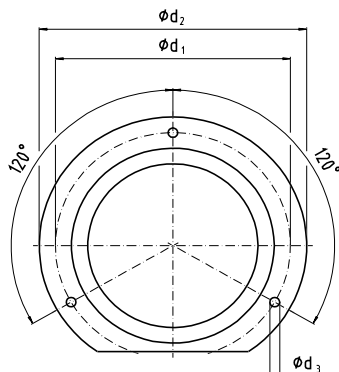
Not applicable for gauges with electrical accessories

3-hole panel mounting flange ¹⁾



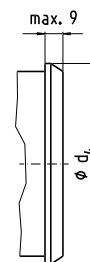
1035 886

3-hole panel mounting flange ²⁾



1035 894

Narrow rim bezel with clamp ¹⁾

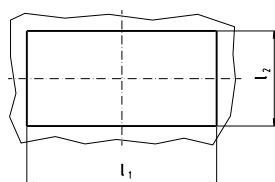


1241 800.01

Size	Dimensions [mm]					
	d_1	d_2	d_3	d_4 max.	1) Panel cut-out to suit back entry gauges	
					3-hole mounting	Clamp mounting
40	51	61	3.6	44	44 ± 0.3	$41.5 + 0.5$
50	60	71	3.6	55.5	54 ± 0.3	51 ± 0.5
63	75	85	3.6	69	67 ± 0.3	$64.5 + 0.5$
80	95	110	4.8	88	84 ± 0.3	82 ± 1
100	116	132	4.8	108	104 ± 0.5	$102 + 1$
160	178	196	5.8	168	164 ± 0.5	$162 + 1$
250	270	285	5.8	-	254 ± 0.5	-

2) Some gauges may feature lugs instead of a full size rim.

Panel cut-out dimensions per DIN 43 700 for square and edgewise panel mounting gauges



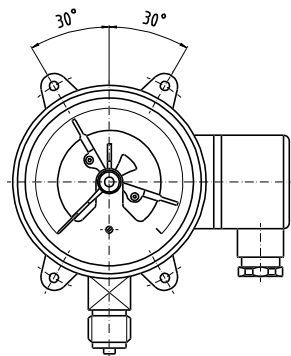
1035 878

Size	Dimensions [mm]			
	l_1		l_2	
		Tolerance + ... 0		Tolerance + ... 0
48 x 24	45	+ 0.6	22.2	+ 0.3
72 x 36	68	+ 0.7	33	+ 0.6
72 x 72	68	+ 0.7	68	+ 0.7
96 x 96	92	+ 0.8	92	+ 0.8
144 x 144	138	+ 1.0	138	+ 1.0
144 x 72	138	+ 1.0	68	+ 0.7

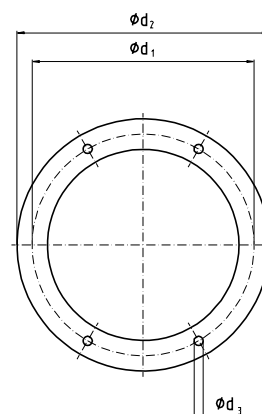
3-hole panel mounting flange

Round case gauges with electrical accessories

Mounting lugs at case of gauge
(holding gauge in panel)



Outer panel ring
(covering panel cut-out)



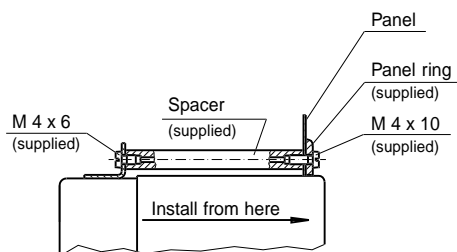
1294 687

Size	Dimensions [mm]			
	d_1	d_2	d_3	Panel cut-out ϕ
100	116	132	4.8	105
160	178	196	5.8 ¹⁾	165

1) Mounting lugs with internal thread M 5.

Panel assembly for gauges with inbuilt electrical accessories

100 mm diameter

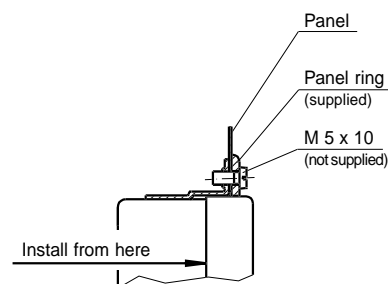


1294 695

The assembly consists of:

Outer panel ring
4 spacers
8 screws M 4

160 mm diameter



1294 709

The assembly consists of:

Outer panel ring
Additionally required:
4 screws M 5 x 10

Note: In addition to this data sheet, mounting drawings referring to the respective models can be supplied.

Specifications and dimensions given in this leaflet represent the state of engineering at the time of printing. Modifications may take place and materials specified may be replaced by others without prior notice.



WIKA Alexander Wiegand GmbH & Co. KG
Alexander-Wiegand-Straße · 63911 Klingenberg
☎ (0 93 72) 132-0 · ☎ (0 93 72) 132-406/414
<http://www.wika.de> · E-mail: info@wika.de